

P1=P6=P7=P8=P9=P10=
P11=P13=P14=P18=P19=
P21=P23=P24=P25=P27

P2

VISTA H ESC 1:25
VISTA B ESC 1:25

P3

VISTA H ESC 1:25
VISTA B ESC 1:25

P12=P17

VISTA H ESC 1:25
VISTA B ESC 1:25

P15

VISTA H ESC 1:25
VISTA B ESC 1:25

P16=P26=P28

VISTA H ESC 1:25
VISTA B ESC 1:25

P20

VISTA H ESC 1:25
VISTA B ESC 1:25

P22

VISTA H ESC 1:25
VISTA B ESC 1:25

P29

VISTA H ESC 1:25
VISTA B ESC 1:25

RELAÇÃO DO AÇO

ACQ	N	DIAM	QUANT	C TOTAL	RESUMO DO AÇO
CASO	1	10.0	272	146	40228
	2	12.5	94	86	26446
	3	16.0	81	51	2117
	4	20.0	2	2	8227
	5	25.0	79	91	7098
	6	32.0	102	79	10023
	7	40.0	86	74	889
	8	50.0	9	81	3130
	9	63.0	7	71	2722
	10	80.0	5	70	1435
	11	100.0	5	70	1435
	12	125.0	5	71	1437
	13	150.0	4	58	864
	14	175.0	4	58	864
	15	200.0	4	58	864
	16	225.0	4	58	864
	17	250.0	4	58	864
	18	275.0	4	58	864
	19	300.0	4	58	864
	20	325.0	4	58	864
	21	350.0	4	58	864
	22	375.0	4	58	864
	23	400.0	4	58	864
	24	425.0	4	58	864
	25	450.0	4	58	864
	26	475.0	4	58	864
	27	500.0	4	58	864
	28	525.0	4	58	864
	29	550.0	4	58	864
	30	575.0	4	58	864
	31	600.0	4	58	864
	32	625.0	4	58	864
	33	650.0	4	58	864
	34	675.0	4	58	864
	35	700.0	4	58	864
	36	725.0	4	58	864
	37	750.0	4	58	864
	38	775.0	4	58	864
	39	800.0	4	58	864
	40	825.0	4	58	864
	41	850.0	4	58	864
	42	875.0	4	58	864
	43	900.0	4	58	864
	44	925.0	4	58	864
	45	950.0	4	58	864
	46	975.0	4	58	864
	47	1000.0	4	58	864
	48	1025.0	4	58	864
	49	1050.0	4	58	864
	50	1075.0	4	58	864
	51	1100.0	4	58	864
	52	1125.0	4	58	864
	53	1150.0	4	58	864
	54	1175.0	4	58	864
	55	1200.0	4	58	864
	56	1225.0	4	58	864
	57	1250.0	4	58	864
	58	1275.0	4	58	864
	59	1300.0	4	58	864
	60	1325.0	4	58	864
	61	1350.0	4	58	864
	62	1375.0	4	58	864
	63	1400.0	4	58	864
	64	1425.0	4	58	864
	65	1450.0	4	58	864
	66	1475.0	4	58	864
	67	1500.0	4	58	864
	68	1525.0	4	58	864
	69	1550.0	4	58	864
	70	1575.0	4	58	864
	71	1600.0	4	58	864
	72	1625.0	4	58	864
	73	1650.0	4	58	864
	74	1675.0	4	58	864
	75	1700.0	4	58	864
	76	1725.0	4	58	864
	77	1750.0	4	58	864
	78	1775.0	4	58	864
	79	1800.0	4	58	864
	80	1825.0	4	58	864
	81	1850.0	4	58	864
	82	1875.0	4	58	864
	83	1900.0	4	58	864
	84	1925.0	4	58	864
	85	1950.0	4	58	864
	86	1975.0	4	58	864
	87	2000.0	4	58	864
	88	2025.0	4	58	864
	89	2050.0	4	58	864
	90	2075.0	4	58	864
	91	2100.0	4	58	864
	92	2125.0	4	58	864
	93	2150.0	4	58	864
	94	2175.0	4	58	864
	95	2200.0	4	58	864
	96	2225.0	4	58	864
	97	2250.0	4	58	864
	98	2275.0	4	58	864
	99	2300.0	4	58	864
	100	2325.0	4	58	864
	101	2350.0	4	58	864
	102	2375.0	4	58	864
	103	2400.0	4	58	864
	104	2425.0	4	58	864
	105	2450.0	4	58	864
	106	2475.0	4	58	864
	107	2500.0	4	58	864
	108	2525.0	4	58	864
	109	2550.0	4	58	864
	110	2575.0	4	58	864
	111	2600.0	4	58	864
	112	2625.0	4	58	864
	113	2650.0	4	58	864
	114	2675.0	4	58	864
	115	2700.0	4	58	864
	116	2725.0	4	58	864
	117	2750.0	4	58	864
	118	2775.0	4	58	864
	119	2800.0	4	58	864
	120	2825.0	4	58	864
	121	2850.0	4	58	864
	122	2875.0	4	58	864
	123	2900.0	4	58	864
	124	2925.0	4	58	864
	125	2950.0	4	58	864
	126	2975.0	4	58	864
	127	3000.0	4	58	864
	128	3025.0	4	58	864
	129	3050.0	4	58	864
	130	3075.0	4	58	864
	131	3100.0	4	58	864
	132	3125.0	4	58	864
	133	3150.0	4	58	864
	134	3175.0	4	58	864
	135	3200.0	4	58	864
	136	3225.0	4	58	864
	137	3250.0	4	58	864
	138	3275.0	4	58	864
	139	3300.0	4	58	864
	140	3325.0	4	58	864
	141	3350.0	4	58	864
	142	3375.0	4	58	864
	143	3400.0	4	58	864
	144	3425.0	4	58	864
	145	3450.0	4	58	864
	146	3475.0	4	58	864
	147	3500.0	4	58	864
	148	3525.0	4	58	864
	149	3550.0	4	58	864
	150	3575.0	4	58	864

V2

V4

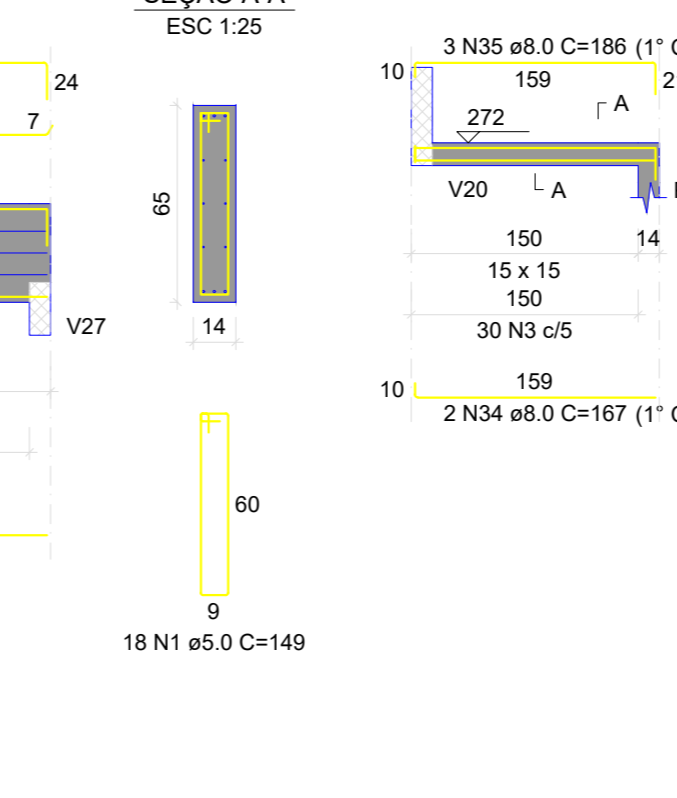
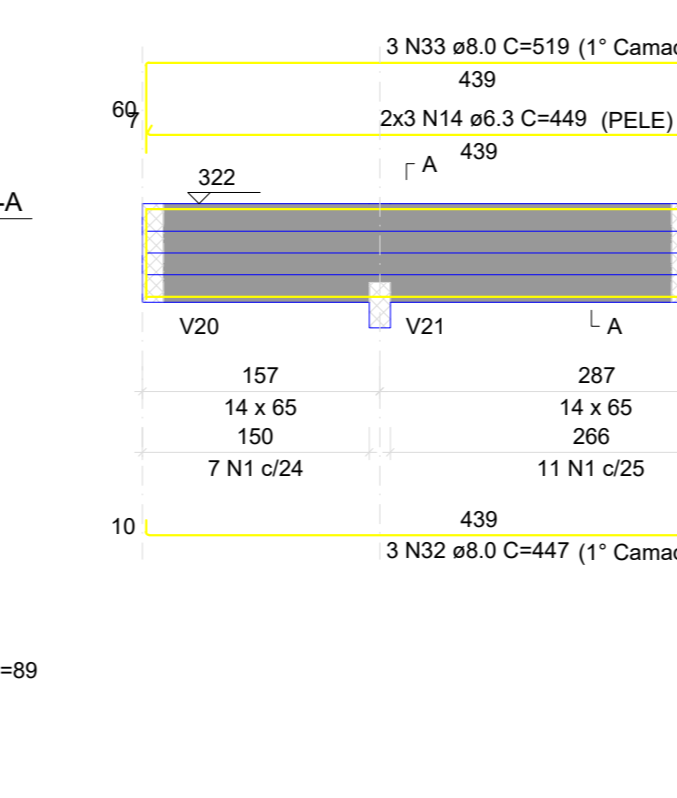
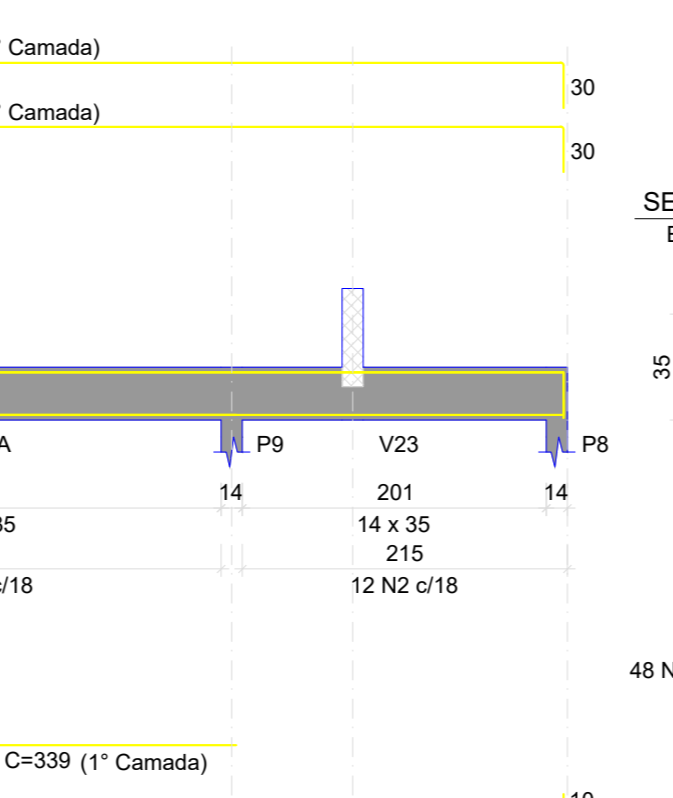
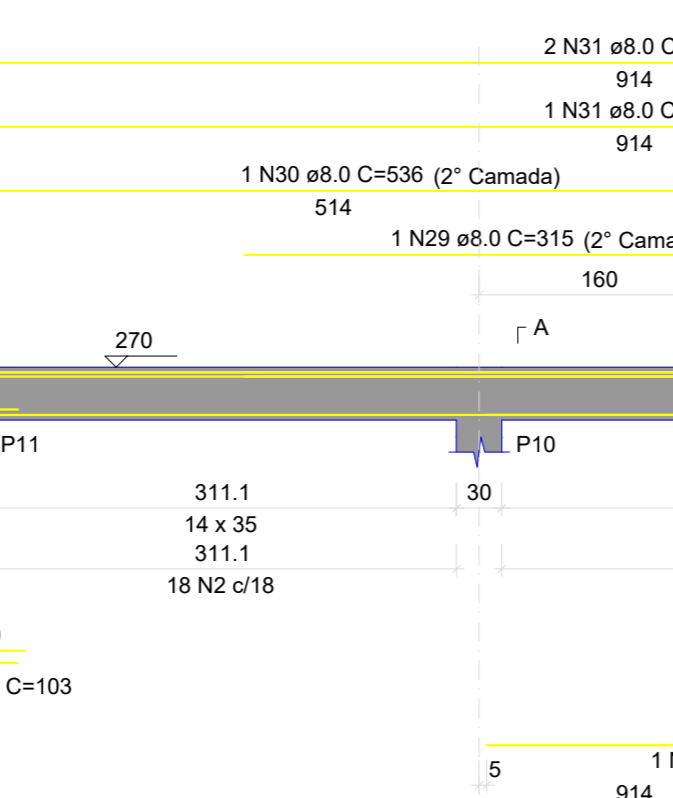
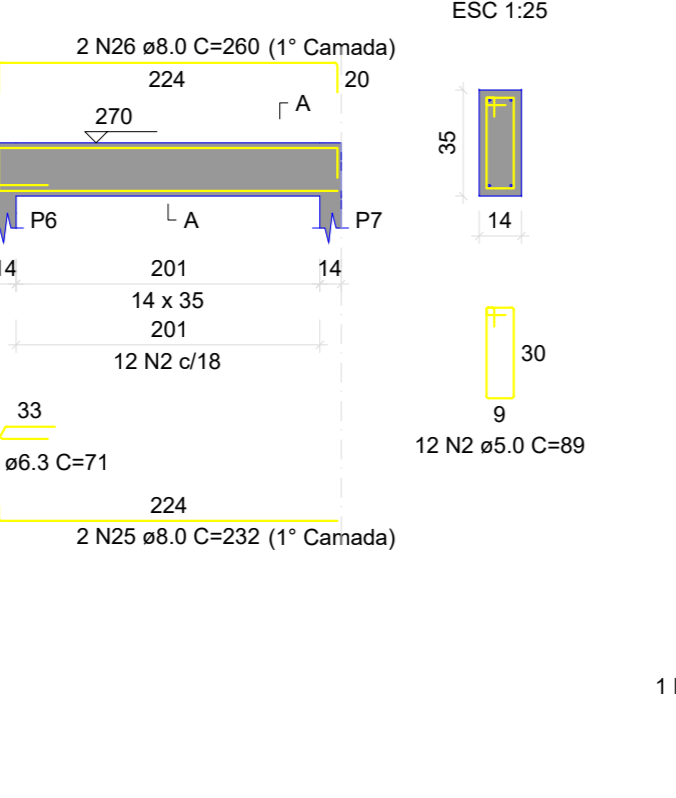
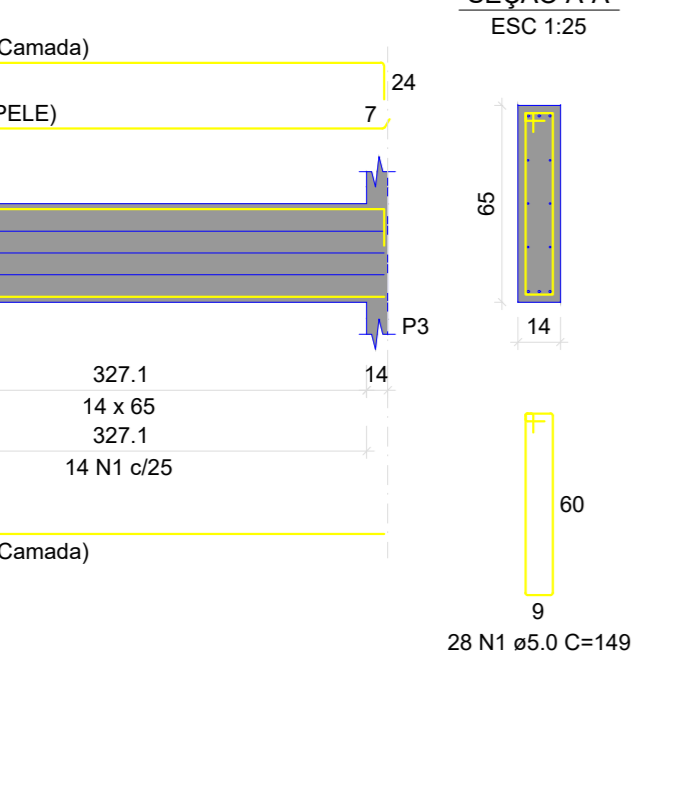
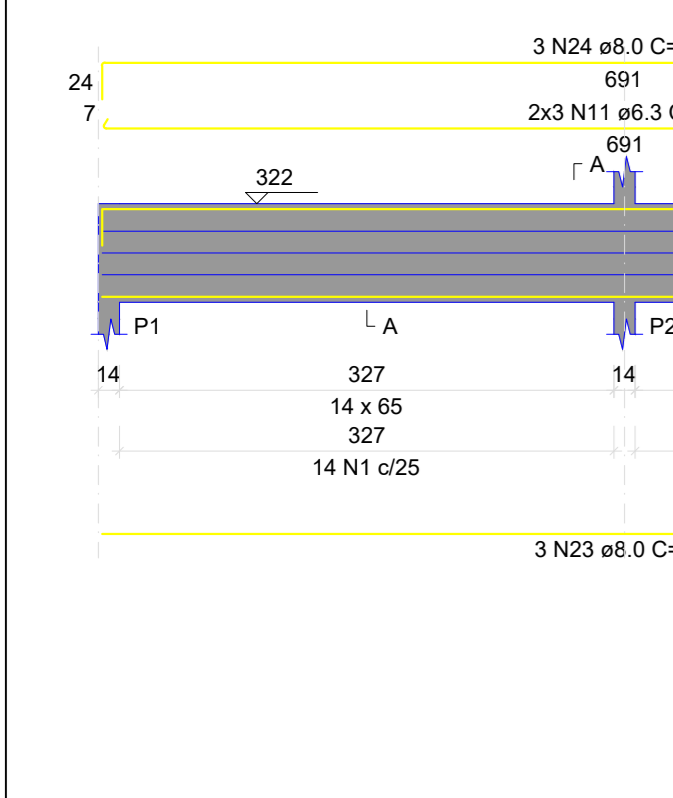
V7

V8

V9

V10

V17



V11

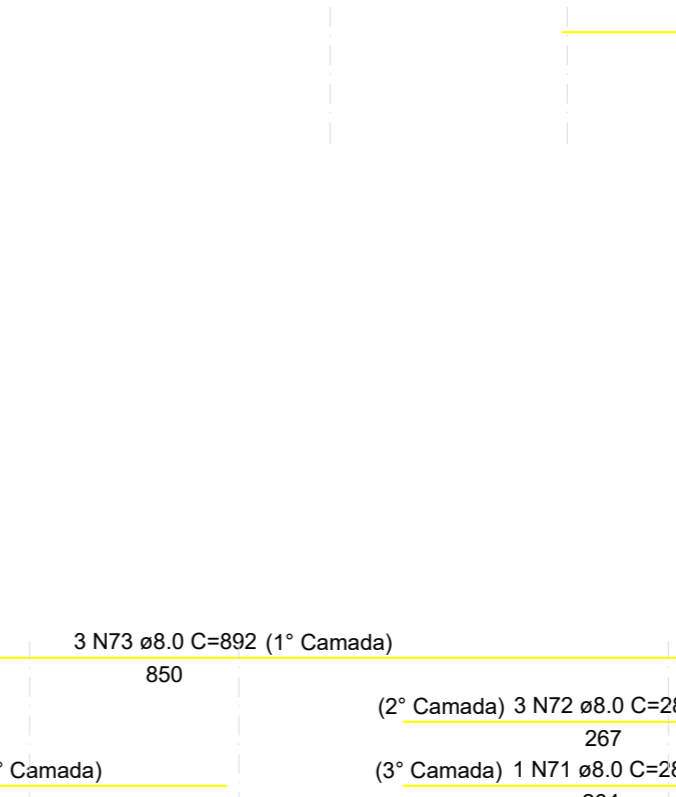
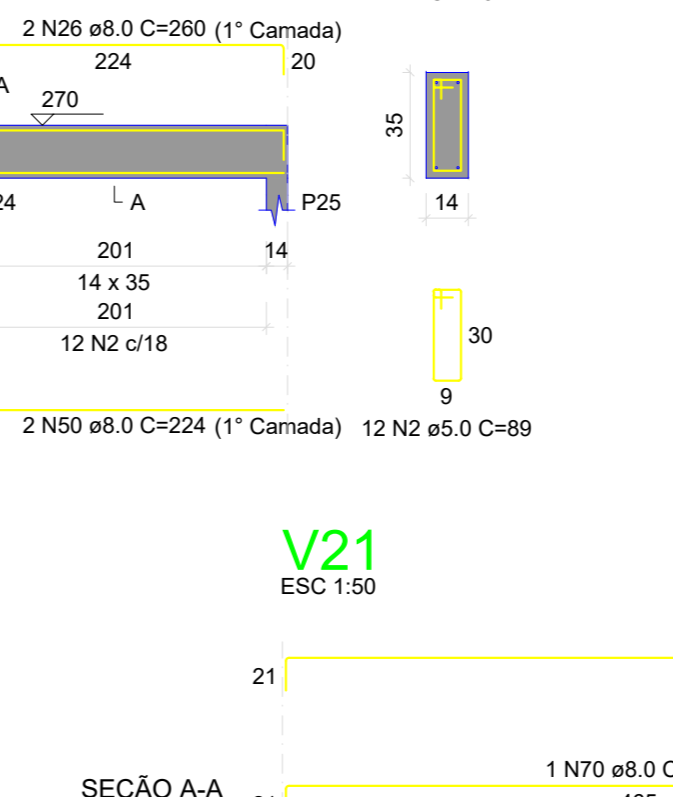
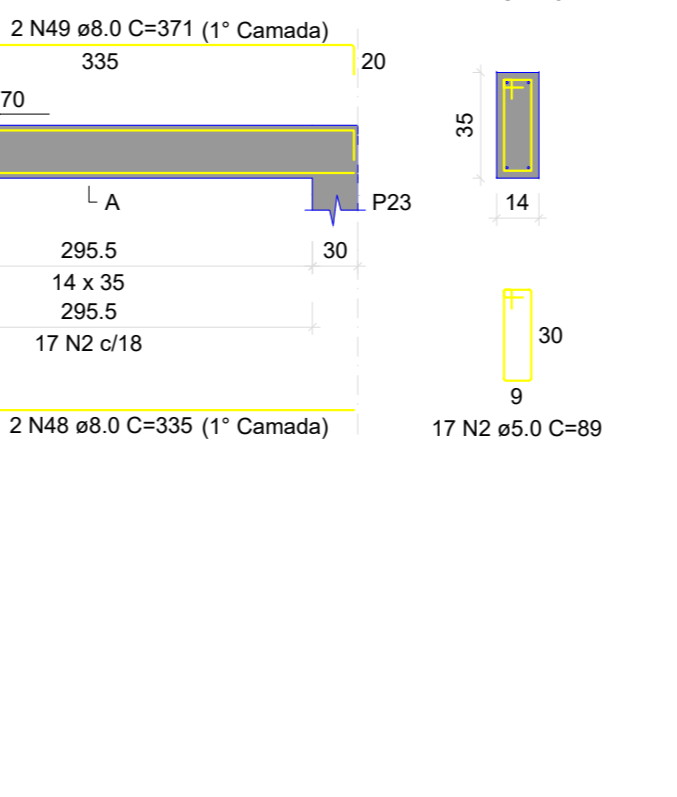
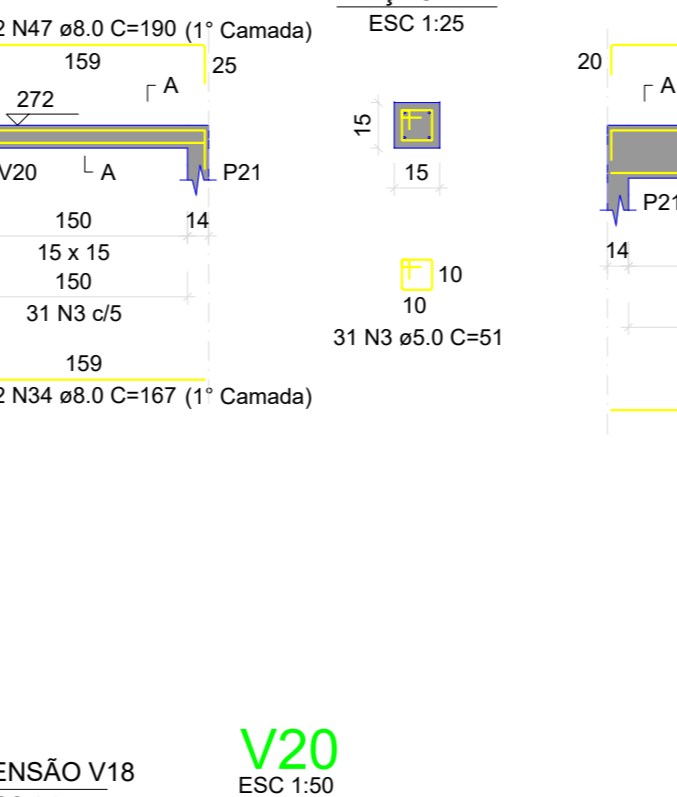
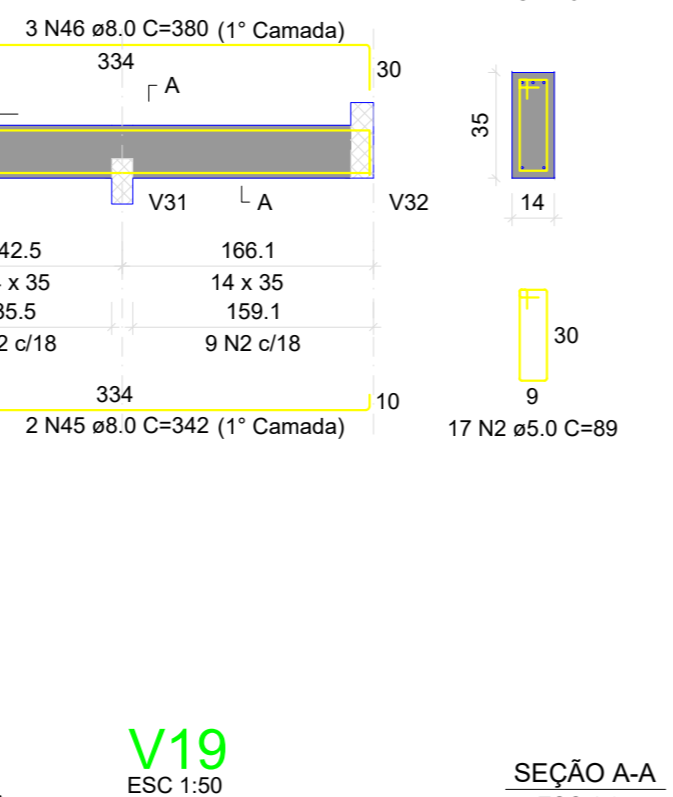
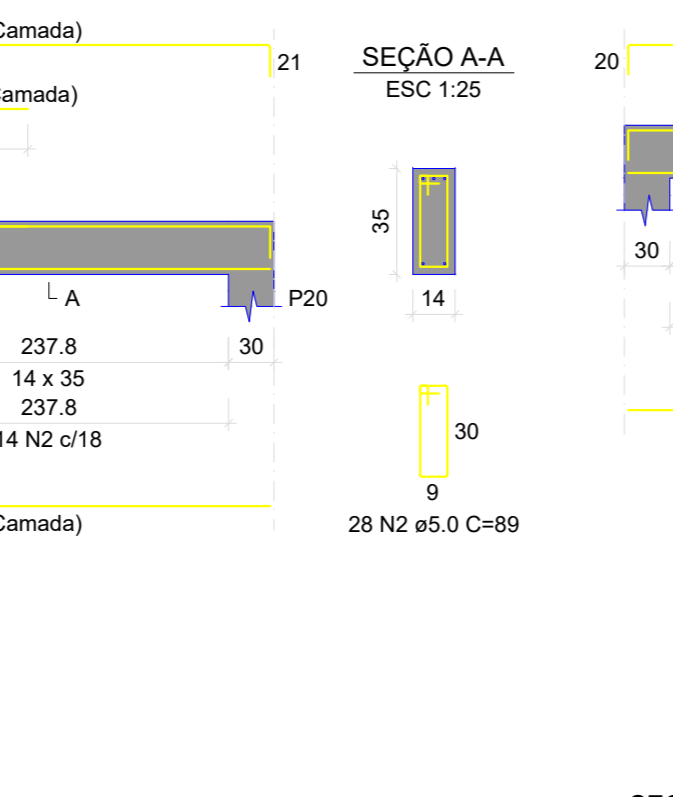
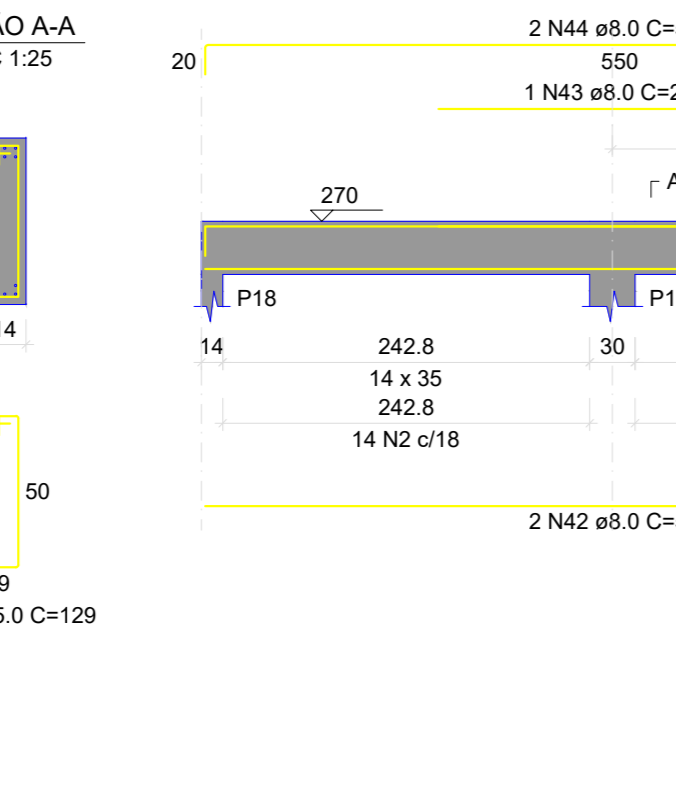
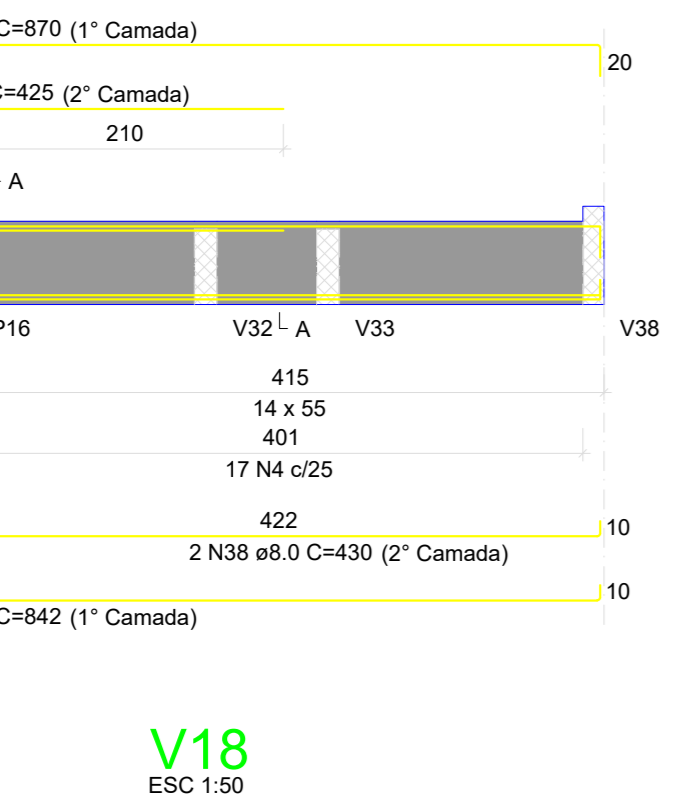
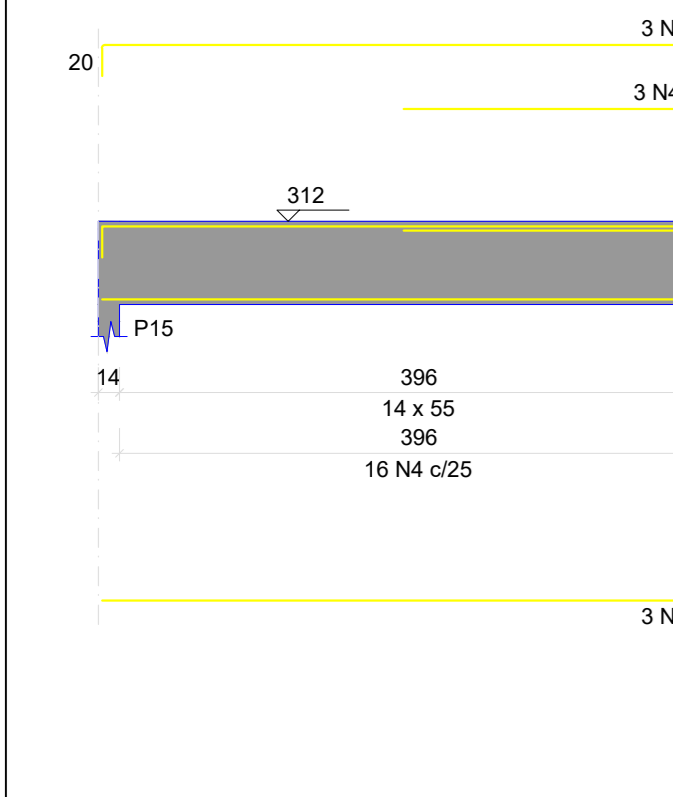
V12

V13

V14

V15

V16



RELAÇÃO DO AÇO

ACQ	N	DIAM	QUANT	C TOTAL
CASO	1	10.0	272	146
	2	12.5	94	86
	3	16.0	81	51
	4	20.0	2	2
	5	25.0	79	91
	6	32.0	102	79
	7	40.0	86	74
	8	50.0	9	81
	9	63.0	7	71
	10	80.0	5	70
	11	100.0	5	70
	12	125.0	5	71
	13	150.0	4	58
	14	175.0	4	58
	15	200.0	4	58
	16	225.0	4	58
	17	250.0	4	58
</				