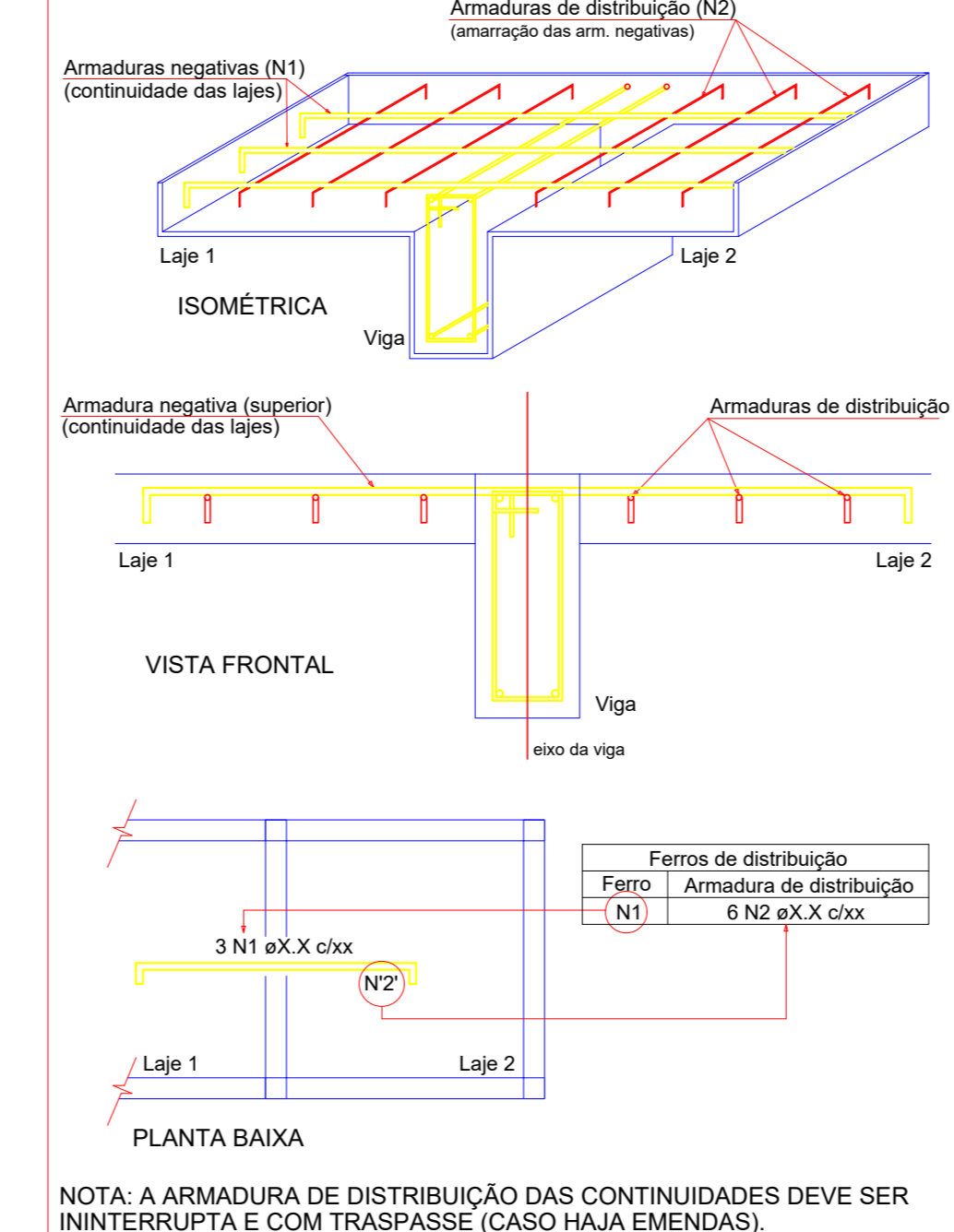


Armaduras de distribuição

Armadura	Armadura de distribuição
N22	3 N1 a5.0 c20 C=410
N23	8 N2 a5.0 c20 C=138
N24	8 N3 a5.0 c20 C=292
N25	8 N4 a5.0 c20 C=420
N26	13 N5 a5.0 c20 C=240
N27	16 N6 a5.0 c20 C=470
N28	12 N7 a5.0 c20 C=290
N29	12 N8 a5.0 c20 C=100
N25	8 N9 a5.0 c20 C=330

Armação negativa das lajes do pavimento Cobertura (Eixo X) escala 1:50

DETALHE DA ARMADURA SUPERIOR DE CONTINUIDADE DA LAJE E MONTAGEM DA ARMADURA DE DISTRIBUIÇÃO

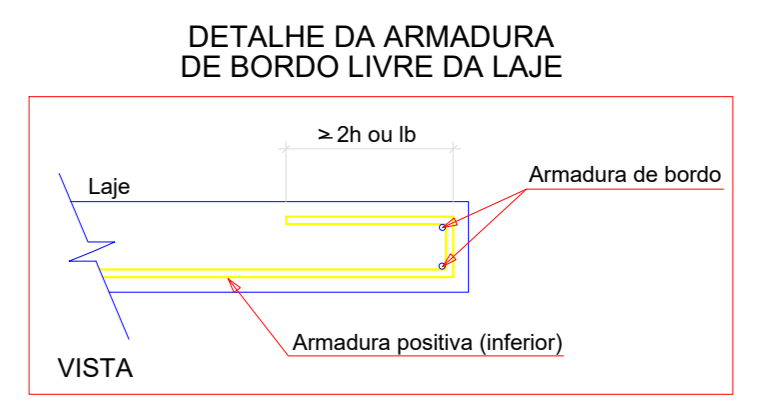


RELATÓRIO DO AÇO

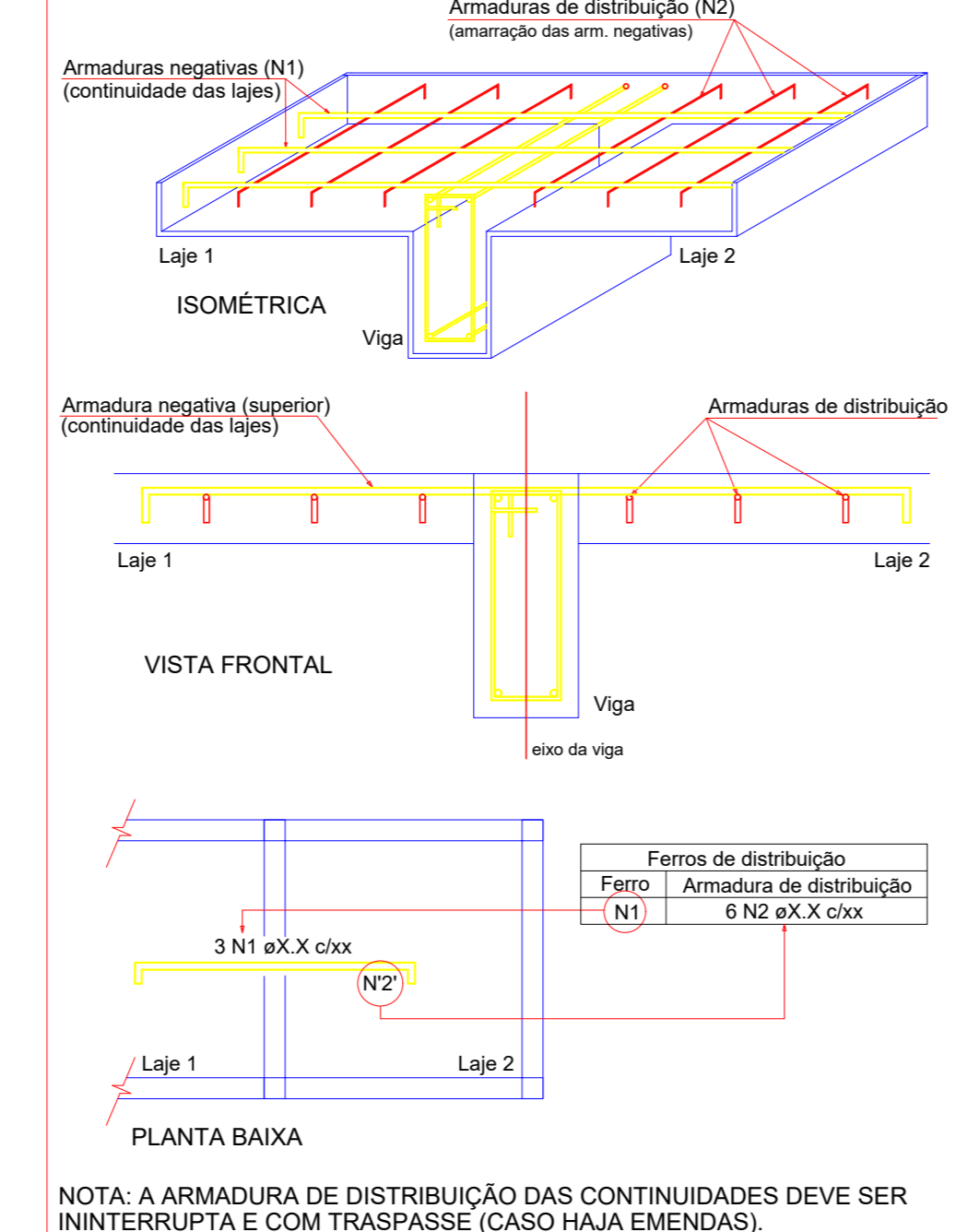
CASO	Negativos X			Negativos Y			Positivos Y					
	ACQ	N	DIAM (mm)	QUANT	CLINT (mm)	C.TOTAL (mm)	ACQ	N	DIAM (mm)	QUANT	CLINT (mm)	C.TOTAL (mm)
1	0.0	0	0	0	0	0	0.0	0	0	0	0	0
2	0.0	0	0	0	0	0	0.0	0	0	0	0	0
3	0.0	0	0	0	0	0	0.0	0	0	0	0	0
4	0.0	0	0	0	0	0	0.0	0	0	0	0	0
5	0.0	0	0	0	0	0	0.0	0	0	0	0	0
6	0.0	0	0	0	0	0	0.0	0	0	0	0	0
7	0.0	0	0	0	0	0	0.0	0	0	0	0	0
8	0.0	0	0	0	0	0	0.0	0	0	0	0	0
9	0.0	0	0	0	0	0	0.0	0	0	0	0	0
10	0.0	0	0	0	0	0	0.0	0	0	0	0	0
11	0.0	0	0	0	0	0	0.0	0	0	0	0	0
12	0.0	0	0	0	0	0	0.0	0	0	0	0	0
13	0.0	0	0	0	0	0	0.0	0	0	0	0	0
14	0.0	0	0	0	0	0	0.0	0	0	0	0	0
15	0.0	0	0	0	0	0	0.0	0	0	0	0	0
16	0.0	0	0	0	0	0	0.0	0	0	0	0	0
17	0.0	0	0	0	0	0	0.0	0	0	0	0	0
18	0.0	0	0	0	0	0	0.0	0	0	0	0	0
19	0.0	0	0	0	0	0	0.0	0	0	0	0	0
20	0.0	0	0	0	0	0	0.0	0	0	0	0	0
21	0.0	0	0	0	0	0	0.0	0	0	0	0	0
22	0.0	0	0	0	0	0	0.0	0	0	0	0	0
23	0.0	0	0	0	0	0	0.0	0	0	0	0	0
24	0.0	0	0	0	0	0	0.0	0	0	0	0	0
25	0.0	0	0	0	0	0	0.0	0	0	0	0	0
26	0.0	0	0	0	0	0	0.0	0	0	0	0	0
27	0.0	0	0	0	0	0	0.0	0	0	0	0	0
28	0.0	0	0	0	0	0	0.0	0	0	0	0	0
29	0.0	0	0	0	0	0	0.0	0	0	0	0	0
30	0.0	0	0	0	0	0	0.0	0	0	0	0	0
31	0.0	0	0	0	0	0	0.0	0	0	0	0	0
32	0.0	0	0	0	0	0	0.0	0	0	0	0	0
33	0.0	0	0	0	0	0	0.0	0	0	0	0	0
34	0.0	0	0	0	0	0	0.0	0	0	0	0	0
35	0.0	0	0	0	0	0	0.0	0	0	0	0	0
36	0.0	0	0	0	0	0	0.0	0	0	0	0	0
37	0.0	0	0	0	0	0	0.0	0	0	0	0	0
38	0.0	0	0	0	0	0	0.0	0	0	0	0	0
39	0.0	0	0	0	0	0	0.0	0	0	0	0	0
40	0.0	0	0	0	0	0	0.0	0	0	0	0	0
41	0.0	0	0	0	0	0	0.0	0	0	0	0	0
42	0.0	0	0	0	0	0	0.0	0	0	0	0	0
43	0.0	0	0	0	0	0	0.0	0	0	0	0	0
44	0.0	0	0	0	0	0	0.0	0	0	0	0	0
45	0.0	0	0	0	0	0	0.0	0	0	0	0	0
46	0.0	0	0	0	0	0	0.0	0	0	0	0	0
47	0.0	0	0	0	0	0	0.0	0	0	0	0	0
48	0.0	0	0	0	0	0	0.0	0	0	0	0	0
49	0.0	0	0	0	0	0	0.0	0	0	0	0	0
50	0.0	0	0	0	0	0	0.0	0	0	0	0	0

RESUMO DO AÇO

CASO	ACQ (mm)	DIAM (mm)	C.TOTAL (mm)	QUANT + 6%	UNIT (kg)	PERO + 6%
1	0.0	0	0	0	0	0
2	0.0	0	0	0	0	0
3	0.0	0	0	0	0	0
4	0.0	0	0	0	0	0
5	0.0	0	0	0	0	0
6	0.0	0	0	0	0	0
7	0.0	0	0	0	0	0
8	0.0	0	0	0	0	0
9	0.0	0	0	0	0	0
10	0.0	0	0	0	0	0
11	0.0	0	0	0	0	0
12	0.0	0	0	0	0	0
13	0.0	0	0	0	0	0
14	0.0	0	0	0	0	0
15	0.0	0	0	0	0	0
16	0.0	0	0	0	0	0
17	0.0	0	0	0	0	0
18	0.0	0	0	0	0	0
19	0.0	0	0	0	0	0
20	0.0	0	0	0	0	0
21	0.0	0	0	0	0	0
22	0.0	0	0	0	0	0
23	0.0	0	0	0	0	0
24	0.0	0	0	0	0	0
25	0.0	0	0	0	0	0
26	0.0	0	0	0	0	0
27	0.0	0	0	0	0	0
28	0.0	0	0	0	0	0
29	0.0	0	0	0	0	0
30	0.0	0	0	0	0	0
31	0.0	0	0	0	0	0
32	0.0	0	0	0	0	0
33	0.0	0	0	0	0	0
34	0.0	0	0	0	0	0
35	0.0	0	0	0	0	0
36	0.0	0	0	0	0	0
37	0.0	0	0	0	0	0
38	0.0	0	0	0	0	0
39	0.0	0	0	0	0	0
40	0.0	0	0	0	0	0
41	0.0	0	0	0	0	0
42	0.0	0	0	0	0	0
43	0.0	0	0	0	0	0
44	0.0	0	0	0	0	0
45	0.0	0	0	0	0	0
46	0.0	0	0	0	0	0
47	0.0	0	0	0	0	0
48	0.0	0	0	0	0	0
49	0.0	0	0	0	0	0
50	0.0	0	0	0	0	0

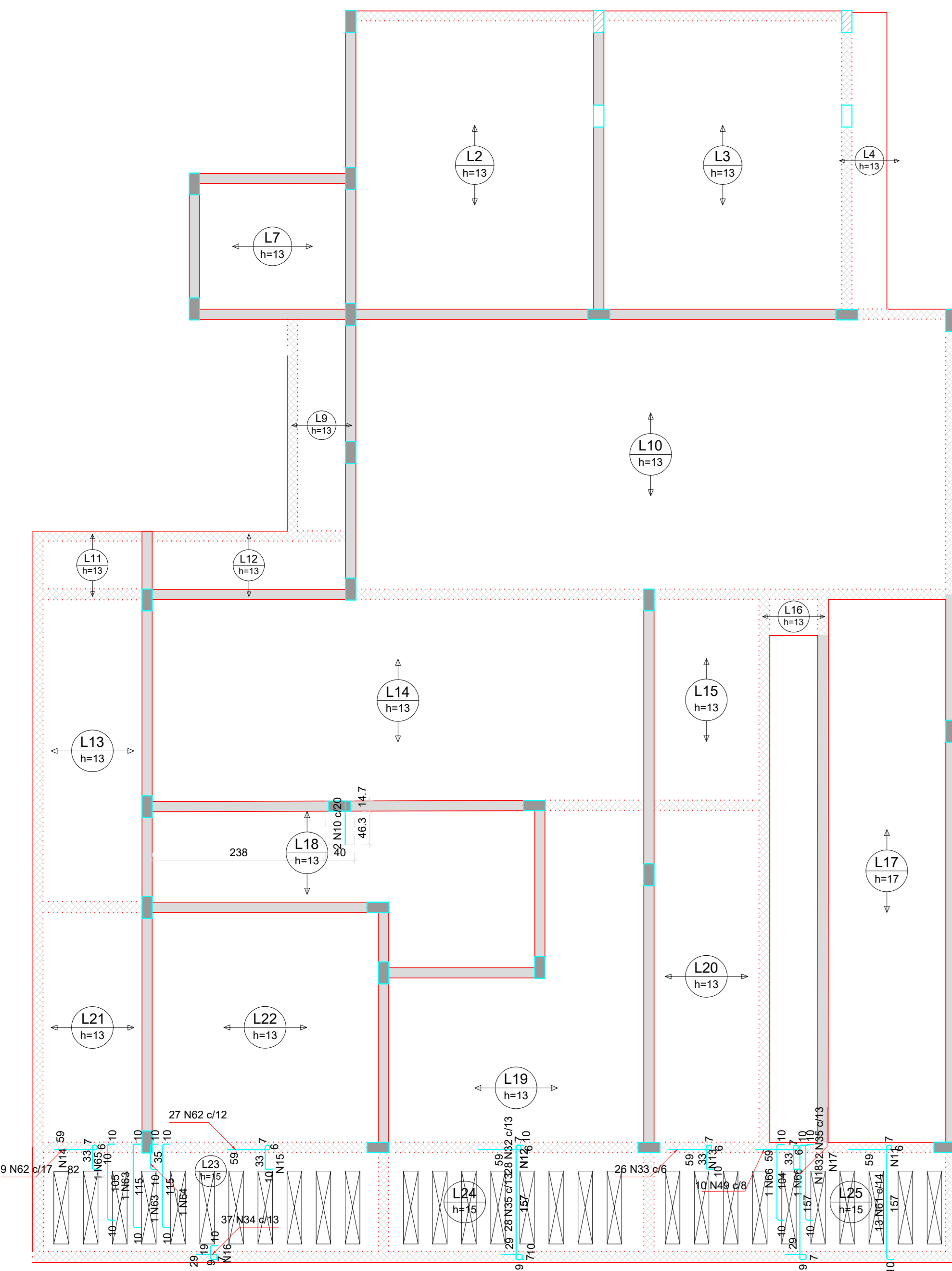


DETALHE DA ARMADURA SUPERIOR DE CONTINUIDADE DA LAJE E MONTAGEM DA ARMADURA DE DISTRIBUIÇÃO

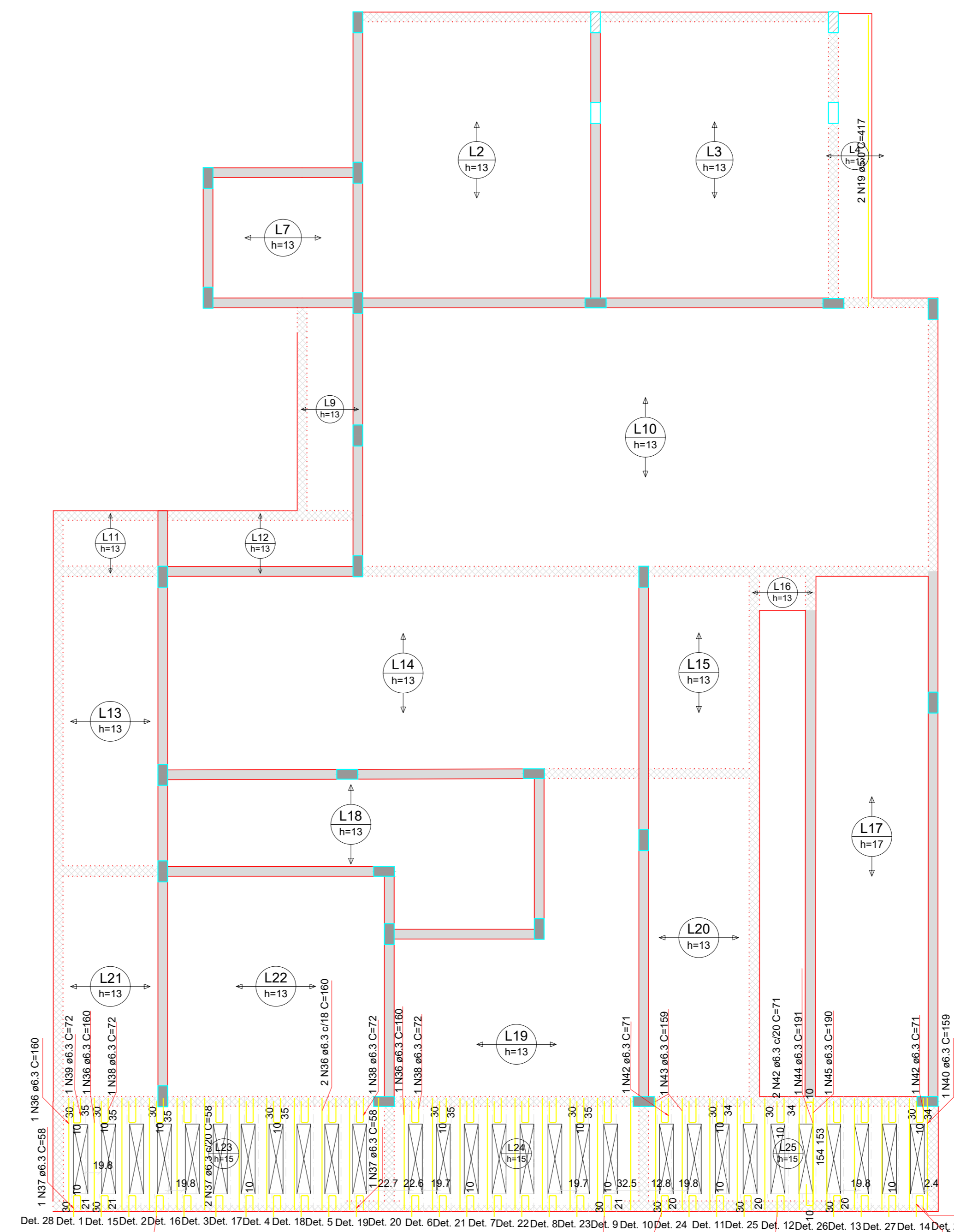


Armaduras de distribuição

Armadura	Armadura de distribuição
N61- N64	10 N11 a5.0 c17 C=176
N21- N29	10 N12 a5.0 c17 C=305
N31- N30	2 N13 a5.0 c17 C=VAR
N62- N45	2 N14 a5.0 c17 C=VAR
N63- N45	3 N15 a5.0 c15 C=VAR
N34- N31	2 N16 a5.0 c17 C=VAR
N35- N32	10 N17 a5.0 c17 C=305
N36- N32	10 N17 a5.0 c17 C=VAR
N49- N42	3 N18 a5.0 c15 C=VAR



Armação negativa das lajes do pavimento Cobertura (Eixo Y) escala 1:50



Armação positiva das lajes do pavimento Cobertura (Eixo Y) escala 1:50

ENGENHEIRO COELHO  
PROFESSOR UNIVERSITÁRIO

CONSTRUÇÃO CASA DA MEMÓRIA

RESPONSÁVEL TÉCNICO  
Eng. Ricardo Chingaglia

PROJETO: Projeto Estrutural - Armação de Lajes e Vigas

PAVIMENTO: 1 UNIDADE: 1 FOLHA: 2

PROPRIETÁRIO: Prefeitura Municipal de Eng. Coelho

DESENHO: Amauri Hereman DATA: 25/05/2021 FOLHA: 5/5