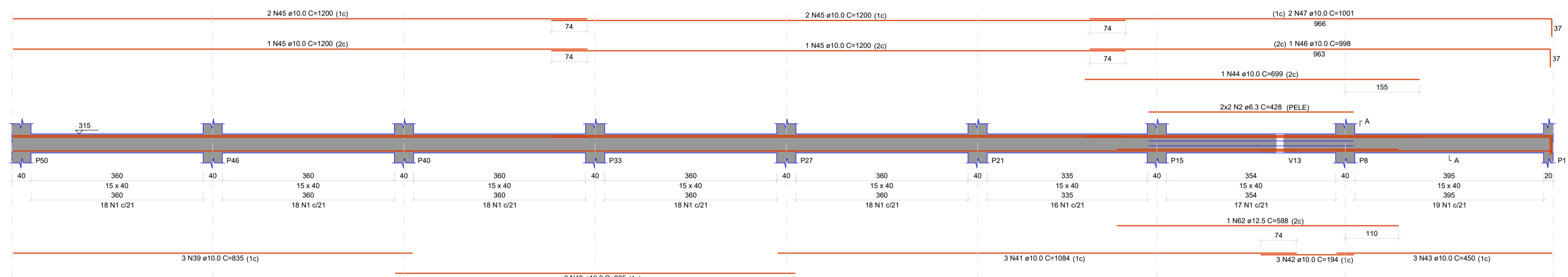
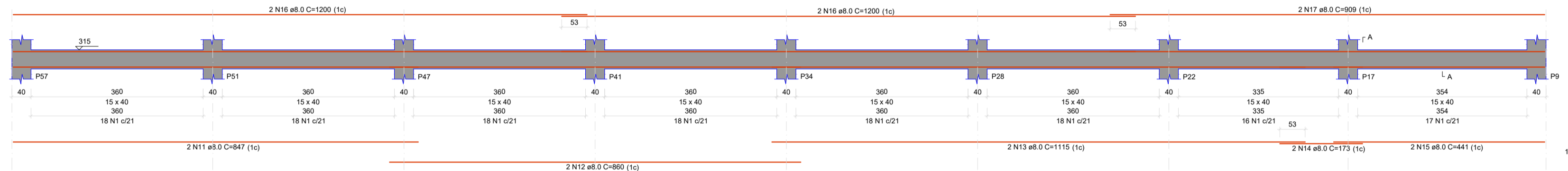


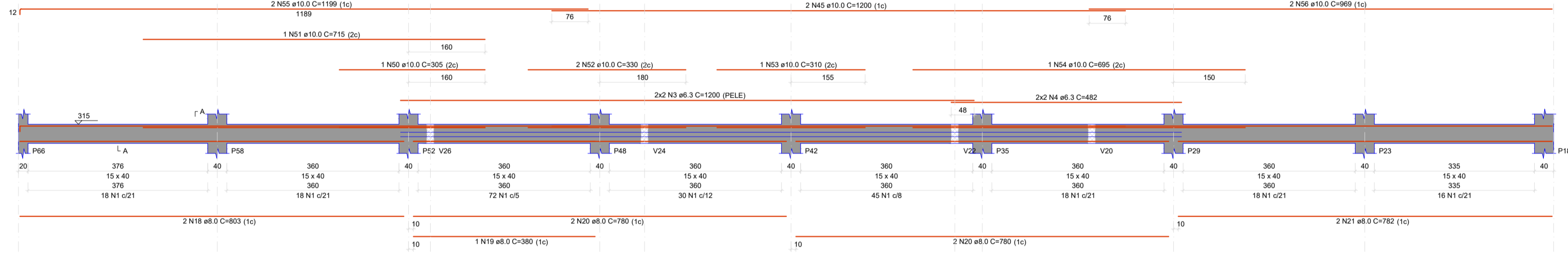
V30
ESC 1:50



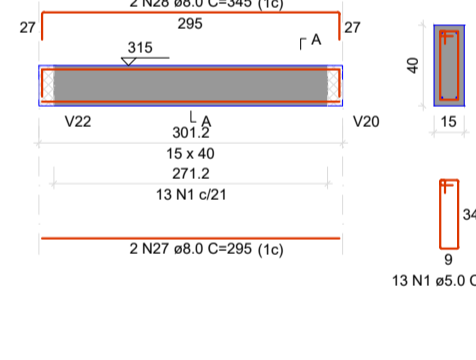
V33
ESC 1:50



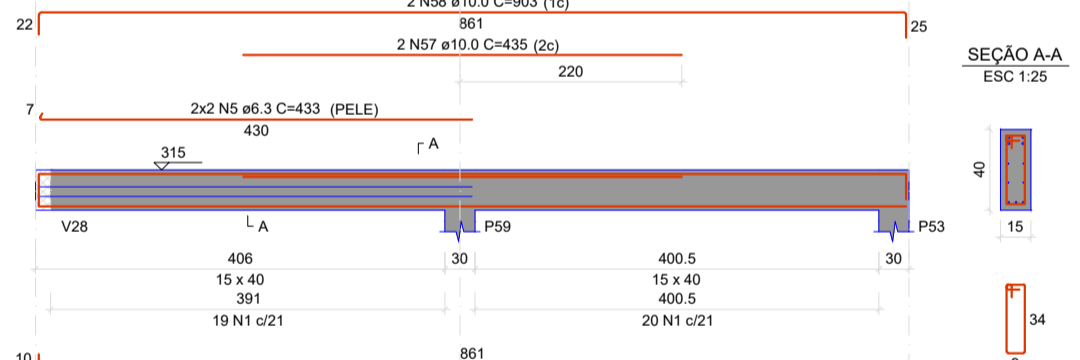
V34
ESC 1:50



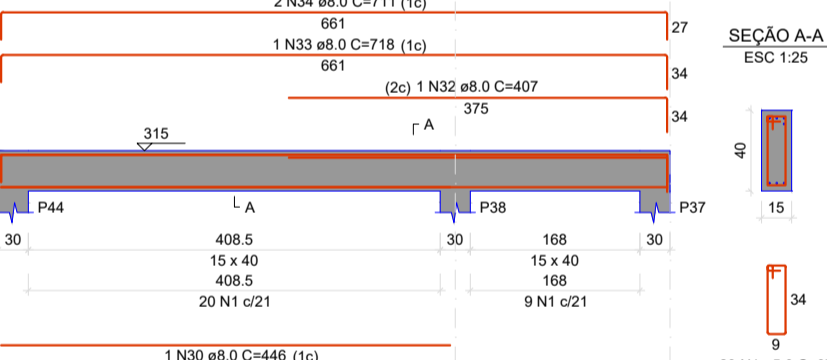
V37
ESC 1:50



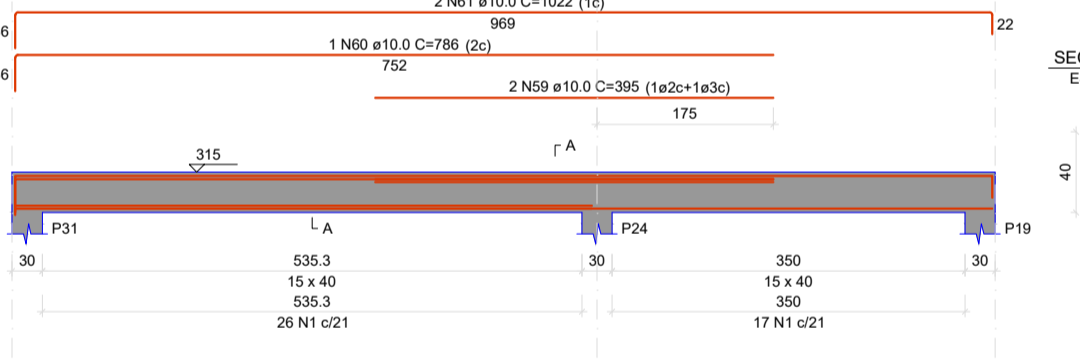
V38
ESC 1:50



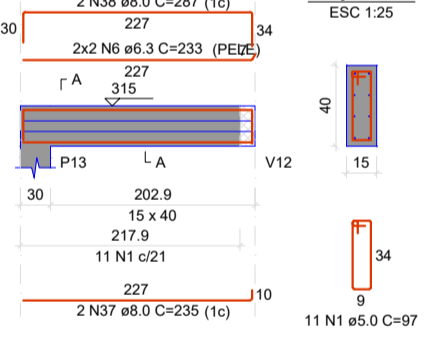
V39
ESC 1:50



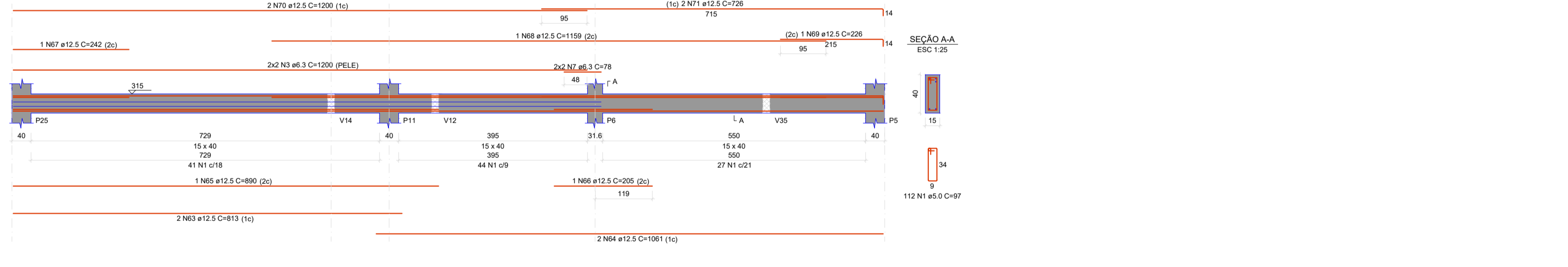
V40
ESC 1:50



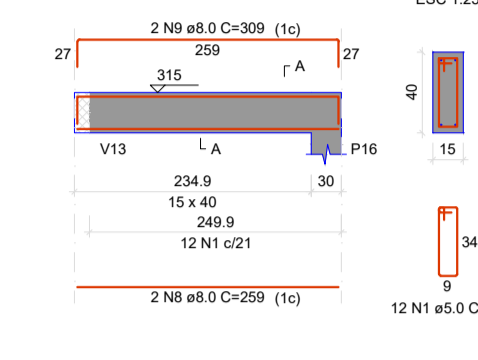
V41
ESC 1:50



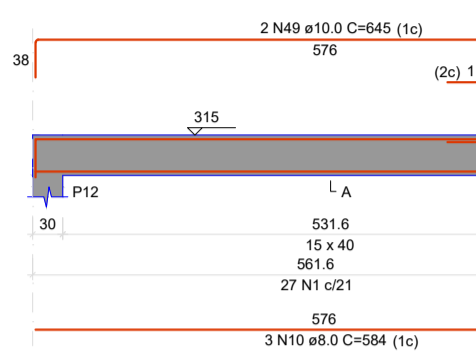
V42
ESC 1:50



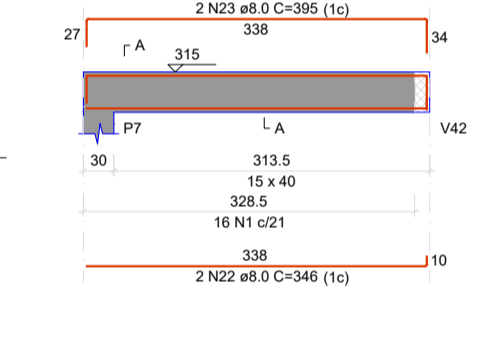
V31
ESC 1:50



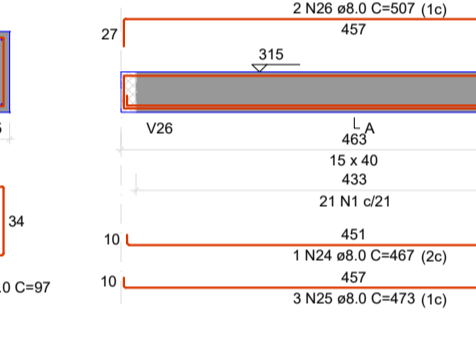
V32
ESC 1:50



V35
ESC 1:50



V36
ESC 1:50



RELACÃO DO AÇO

ACQ	N	DIAM	REGIST	COMPR	C TOTAL
CASO	1	8.0	841	50	91071
CASO	2	8.0	84	428	1732
CASO	3	8.0	8	428	1693
CASO	4	8.0	8	233	623
CASO	5	8.0	8	233	619
CASO	6	8.0	8	233	615
CASO	7	8.0	8	233	611
CASO	8	8.0	8	233	607
CASO	9	8.0	8	233	603
CASO	10	8.0	8	233	599
CASO	11	8.0	8	233	595
CASO	12	8.0	8	233	591
CASO	13	8.0	8	233	587
CASO	14	8.0	8	233	583
CASO	15	8.0	8	233	579
CASO	16	8.0	8	233	575
CASO	17	8.0	8	233	571
CASO	18	8.0	8	233	567
CASO	19	8.0	8	233	563
CASO	20	8.0	8	233	559
CASO	21	8.0	8	233	555
CASO	22	8.0	8	233	551
CASO	23	8.0	8	233	547
CASO	24	8.0	8	233	543
CASO	25	8.0	8	233	539
CASO	26	8.0	8	233	535
CASO	27	8.0	8	233	531
CASO	28	8.0	8	233	527
CASO	29	8.0	8	233	523
CASO	30	8.0	8	233	519
CASO	31	8.0	8	233	515
CASO	32	8.0	8	233	511
CASO	33	8.0	8	233	507
CASO	34	8.0	8	233	503
CASO	35	8.0	8	233	499
CASO	36	8.0	8	233	495
CASO	37	8.0	8	233	491
CASO	38	8.0	8	233	487
CASO	39	8.0	8	233	483
CASO	40	8.0	8	233	479
CASO	41	8.0	8	233	475
CASO	42	8.0	8	233	471
CASO	43	8.0	8	233	467
CASO	44	8.0	8	233	463
CASO	45	8.0	8	233	459
CASO	46	8.0	8	233	455
CASO	47	8.0	8	233	451
CASO	48	8.0	8	233	447
CASO	49	8.0	8	233	443
CASO	50	8.0	8	233	439
CASO	51	8.0	8	233	435
CASO	52	8.0	8	233	431
CASO	53	8.0	8	233	427
CASO	54	8.0	8	233	423
CASO	55	8.0	8	233	419
CASO	56	8.0	8	233	415
CASO	57	8.0	8	233	411
CASO	58	8.0	8	233	407
CASO	59	8.0	8	233	403
CASO	60	8.0	8	233	399
CASO	61	8.0	8	233	395
CASO	62	8.0	8	233	391
CASO	63	8.0	8	233	387
CASO	64	8.0	8	233	383
CASO	65	8.0	8	233	379
CASO	66	8.0	8	233	375
CASO	67	8.0	8	233	371
CASO	68	8.0	8	233	367
CASO	69	8.0	8	233	363
CASO	70	8.0	8	233	359
CASO	71	8.0	8	233	355

RESUMO DO AÇO

ACQ	DIAM	C TOTAL	QUANT + 5%	PESO + 5%
CASO	8.0	162.2	14	26.7
CASO	8.0	392.8	34	70.9
CASO	8.0	985.1	86	186.9
CASO	8.0	819.8	74	170.7
PESO TOTAL				
CASO	8.0	162.2	14	26.7
CASO	8.0	392.8	34	70.9
CASO	8.0	985.1	86	186.9
CASO	8.0	819.8	74	170.7
Volume de concreto (C-25) = 8.73 m³				
Area da forma = 125.03 m²				



Projeto de Estruturas

VIGAS

Endereço: Rua Minas Gerais, nº200, Jardim Brasil, Eng. Coelho - SP

RESPONSÁVEL DO PROJETO
Eng. Ricardo Chinglia
ENGENHEIRO CIVIL
CREA/SP-55696626-8

RESPONSÁVEL DO PROJETO
Bruno Hansen
ENGENHEIRO CIVIL
CREA/SP-307119289-3

Projeto/Desenho	Escala	Tamanho	Data	Nº Folha
Ricardo Chinglia	Indicada	A1	30/10/2023	11/14