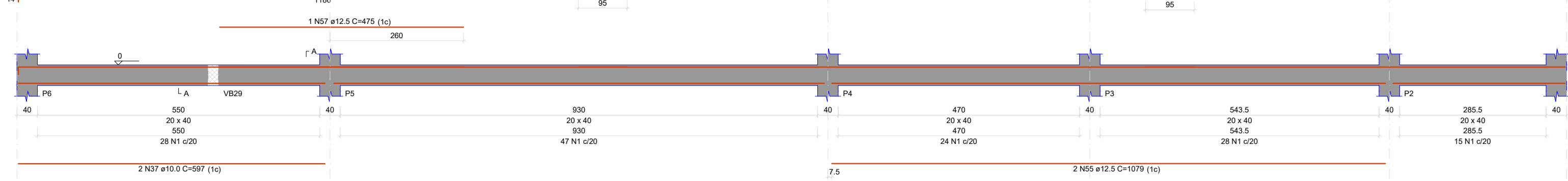
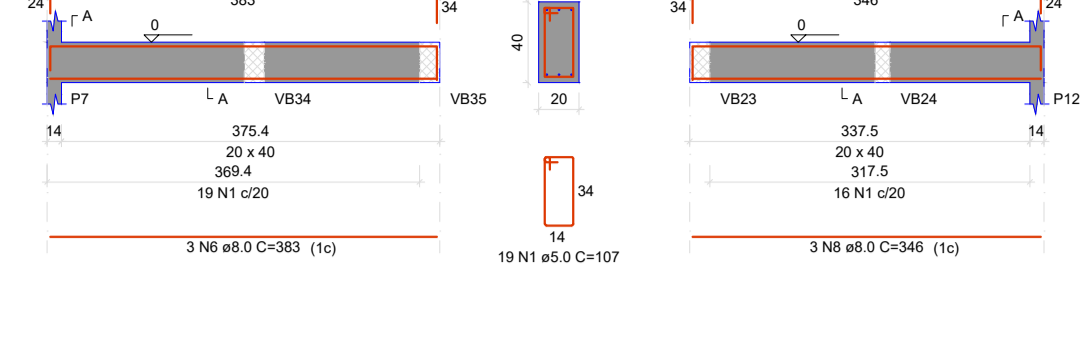


VB1

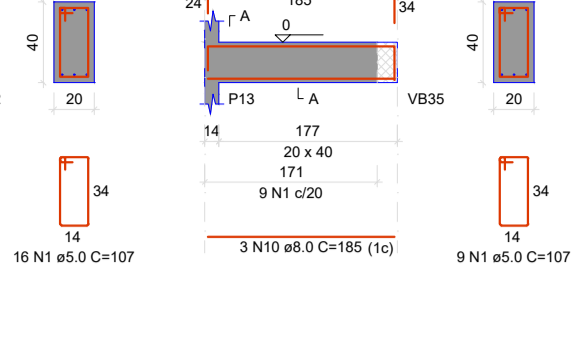
ESC 1:50

**VB2**

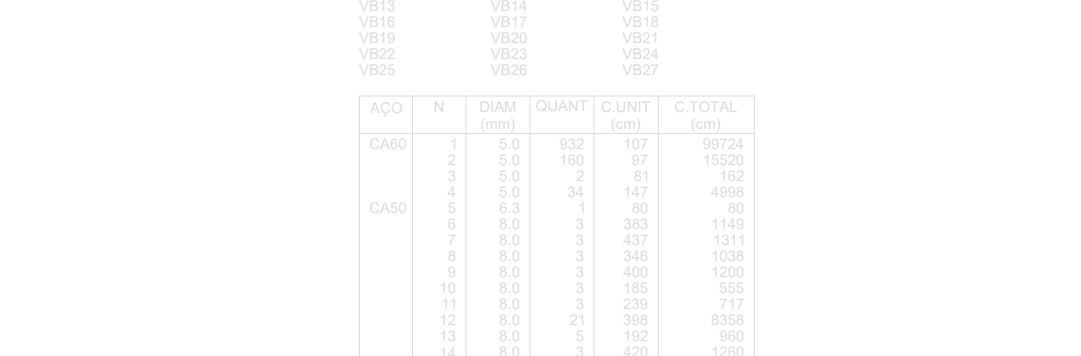
ESC 1:50

**VB3**

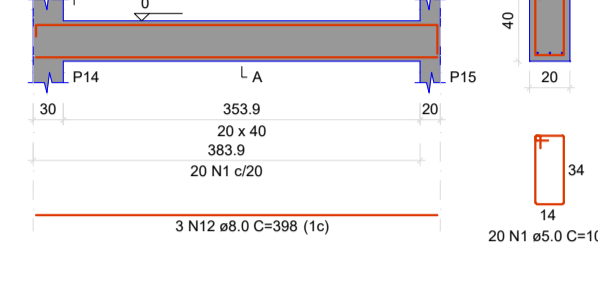
ESC 1:50

**VB4**

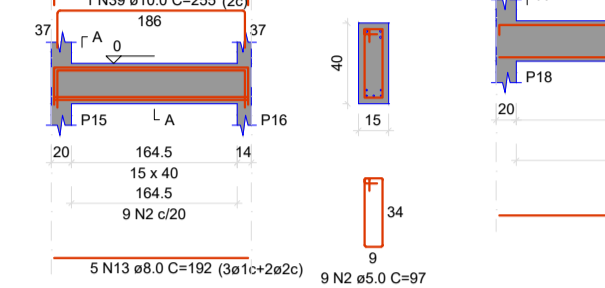
ESC 1:25

**VB5**

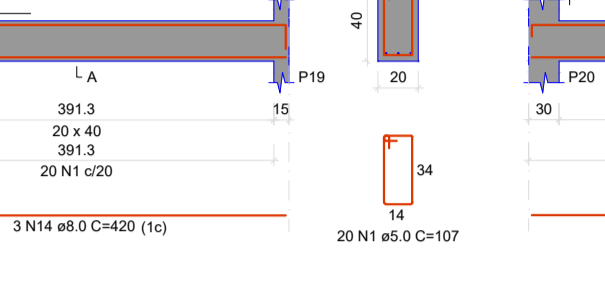
ESC 1:50

**VB6**

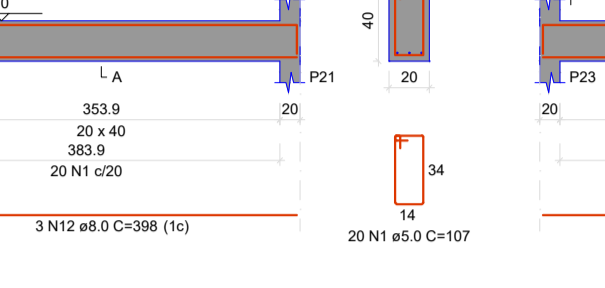
ESC 1:50

**VB7**

ESC 1:50

**VB8**

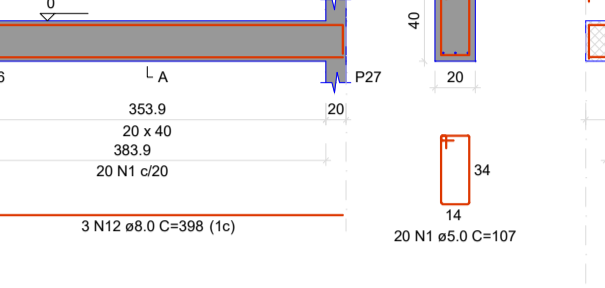
ESC 1:50

**VB9**

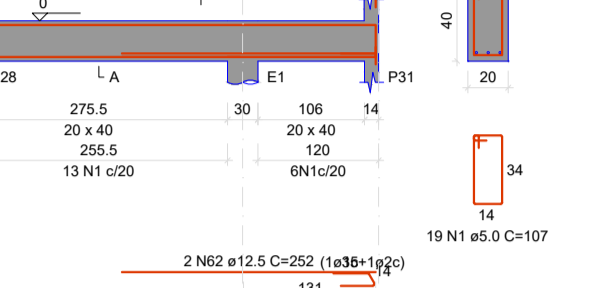
ESC 1:50

**VB10**

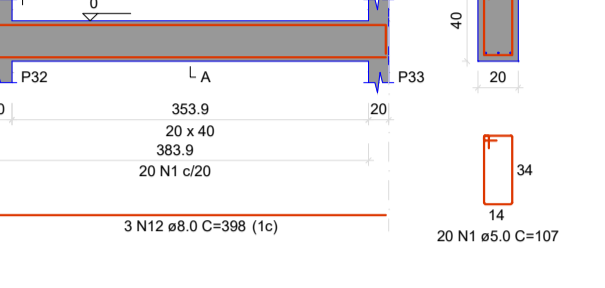
ESC 1:50

**VB11**

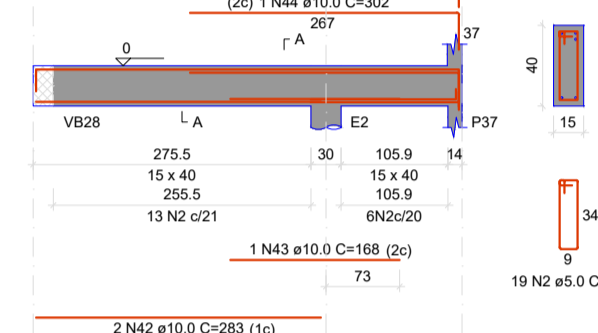
ESC 1:50

**VB12**

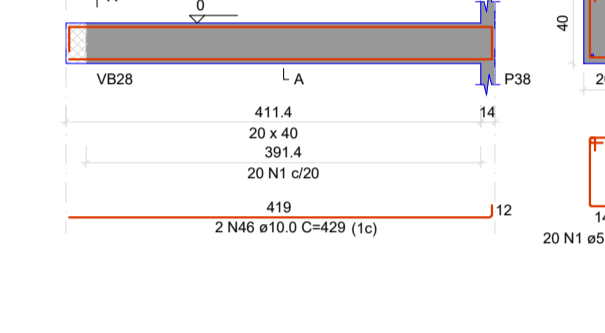
ESC 1:50

**VB13**

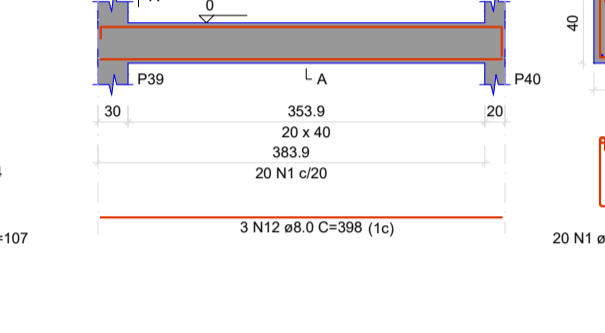
ESC 1:50

**VB14**

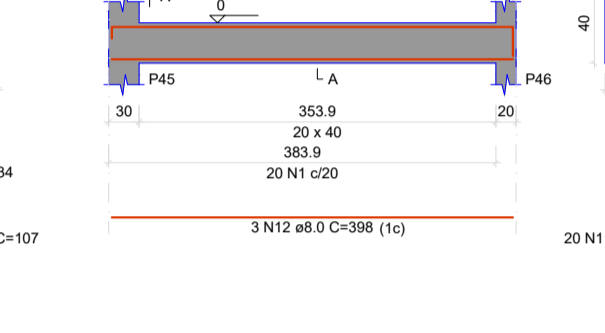
ESC 1:50

**VB15**

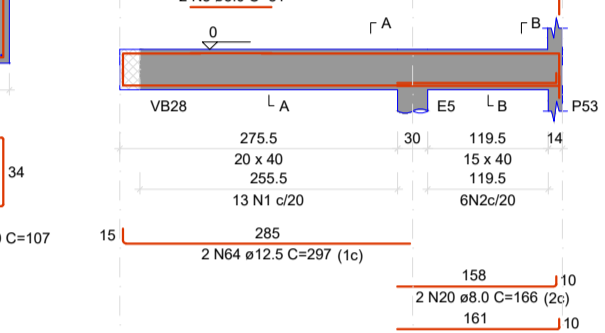
ESC 1:50

**VB16**

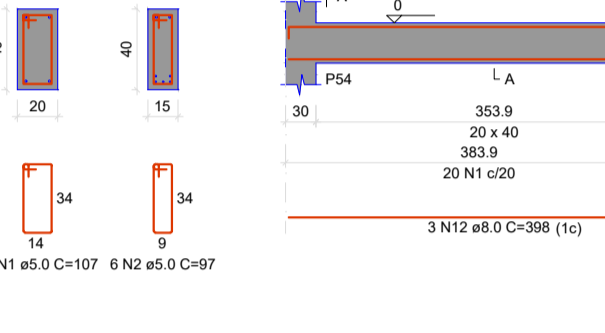
ESC 1:50

**VB17**

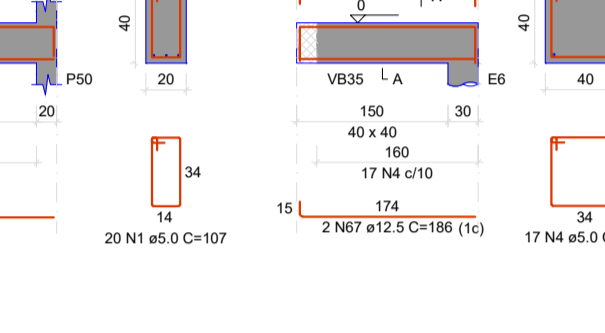
ESC 1:50

**VB18**

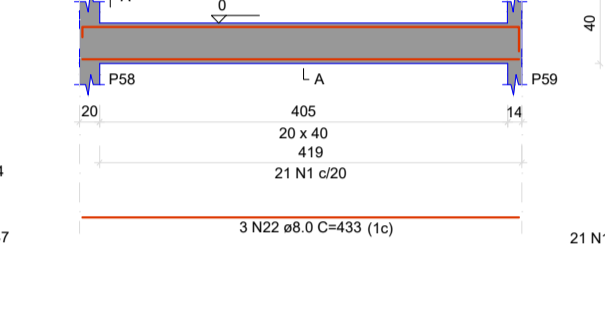
ESC 1:50

**VB19**

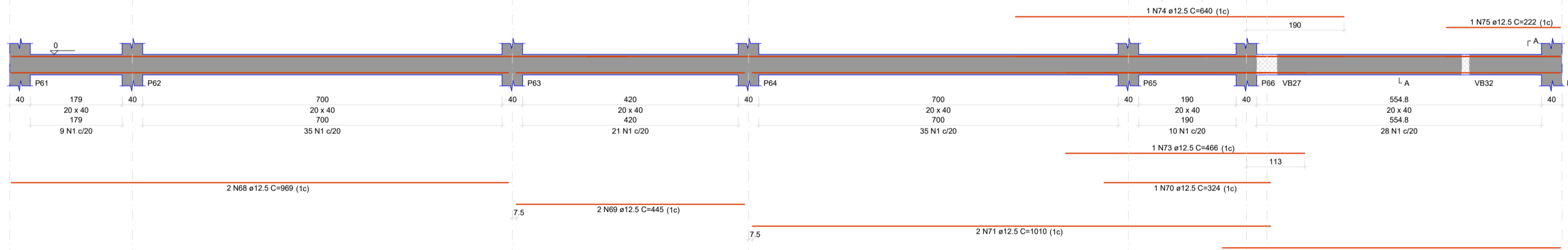
ESC 1:50

**VB20**

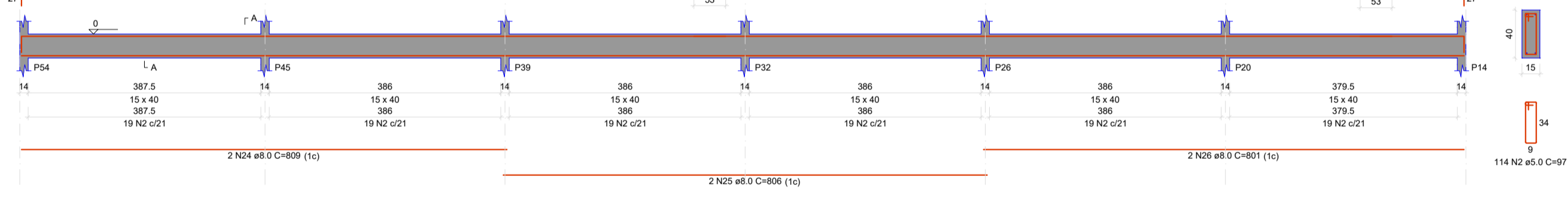
ESC 1:50

**VB21**

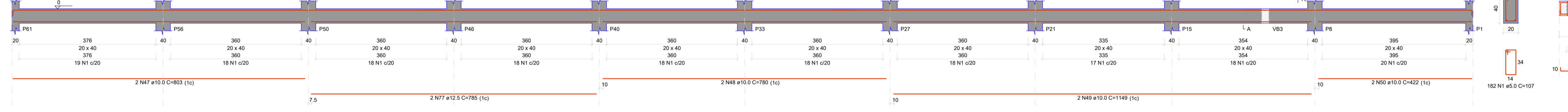
ESC 1:50

**VB22**

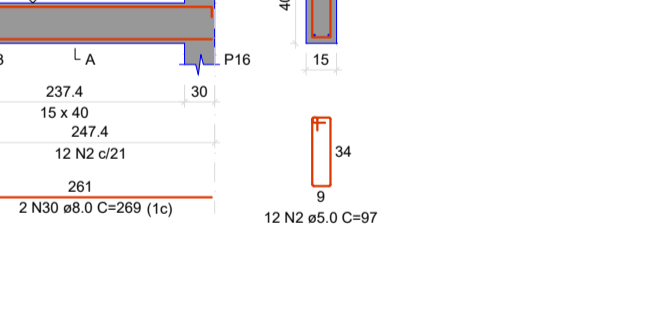
ESC 1:50

**VB23**

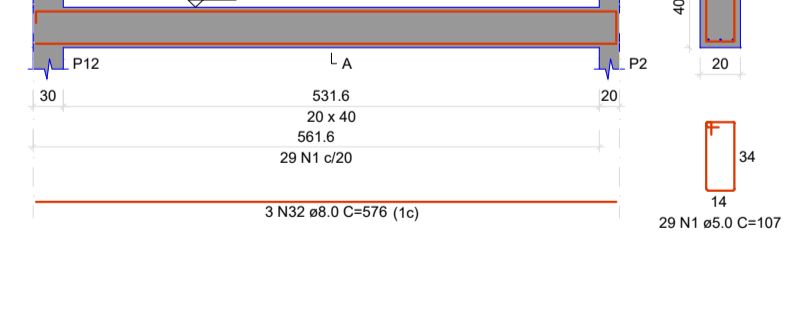
ESC 1:50

**VB24**

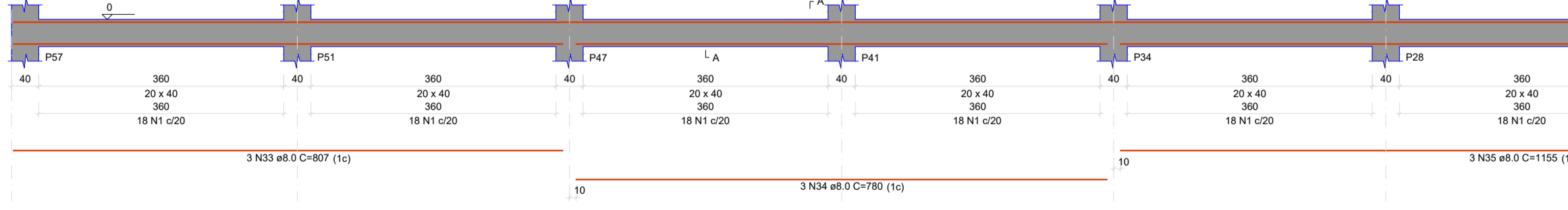
ESC 1:50

**VB25**

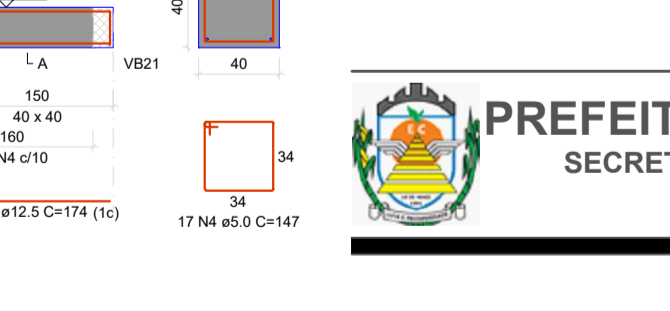
ESC 1:50

**VB26**

ESC 1:50

**VB27**

ESC 1:50



RESUMO DO AÇO

ACAO	TIPO	DIAM (mm)	CENTR (mm)	Q (kg/m)	C TOTAL (kg)	C TOTAL (kg)
CABR	2	5.0	100	0.17	1532	271
CABR	4	5.0	34	0.47	4988	1280
CABR	9	8.0	20	0.32	1441	350
CABR	9	8.0	30	0.38	1564	390
CABR	9	8.0	40	0.45	1690	420
CABR	9	8.0	50	0.52	1816	450
CABR	9	8.0	60	0.60	1942	480
CABR	9	8.0	70	0.68	2068	510
CABR	9	8.0	80	0.76	2194	540
CABR	9	8.0	90	0.84	2320	570
CABR	9	8.0	100	0.92	2446	600
CABR	9	8.0	110	1.00	2572	630
CABR	9	8.0	120	1.08	2698	660
CABR	9	8.0	130	1.16	2824	690
CABR	9	8.0	140	1.24	2950	720
CABR	9	8.0	150	1.32	3076	750
CABR	9	8.0	160	1.40	3202	780
CABR	9	8.0	170	1.48	3328	810
CABR	9	8.0	180	1.56	3454	840
CABR	9	8.0	190	1.64	3580	870
CABR	9	8.0	200	1.72	3706	900
CABR	9	8.0	210	1.80	3832	930
CABR	9	8.0	220	1.88	3958	960
CABR	9	8.0	230	1.96	4084	990
CABR	9	8.0	240	2.04	4210	1020
CABR	9	8.0	250	2.12	4336	1050
CABR	9	8.0	260	2.20	4462	1080
CABR	9	8.0	270	2.28	4588	1110
CABR	9	8.0	280	2.36	4714	1140
CABR	9	8.0	290	2.44	4840	1170
CABR	9	8.0	300	2.52	4966	1200
CABR	9	8.0	310	2.60	5092	1230
CABR	9	8.0	320	2.68	5218	1260
CABR	9	8.0	330	2.76	5344	1290
CABR	9	8.0	340	2.84	5470	1320
CABR	9	8.0	350	2.92	5596	1350
CABR	9	8.0	360	3.00	5722	1380
CABR	9	8.0	370	3.08	5848	1410
CABR	9	8.0	380	3.16	5974	1440
CABR	9	8.0	390	3.24	6100	1470
CABR	9	8.0	400	3.32	6226	1500
CABR	9	8.0	410	3.40	6352	1530
CABR	9	8.0	420	3.48	6478	1560
CABR	9	8.0	430	3.56	6604	1590
CABR	9	8.0	440	3.64	6730	1620
CABR	9	8.0	450	3.72	6856	1650
CABR	9	8.0	460	3.80	6982	1680
CABR	9	8.0	470	3.88	7108	1710
CABR	9	8.0	480	3.96	7234	1740
CABR	9	8.0	490	4.04	7360	1770
CABR	9	8.0	500	4.12	7486	1800
CABR	9	8.0	510	4.20	7612	1830
CABR	9	8.0	520	4.28	7738	1860
CABR	9	8.0	530	4.36	7864	1890
CABR	9	8.0	540	4.44	7990	1920
CABR	9	8.0	550	4.52	8116	1950
CABR	9	8.0	560	4.60	8242	1980
CABR	9	8.0	570	4.68	8368	2010
CABR	9	8.0	580	4.76	8494</	